



LV JUICE

Are You Well-Hung

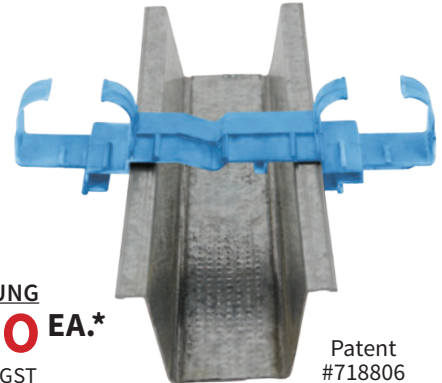
Well-Hung Support Bracket

NZ designed and manufactured, the Well-Hung Support Bracket facilitates effortless installation of electrical and data cables on metal formed and wooden ceiling and wall battens. The bracket clips or screws to a multitude of batten profiles and trusses, ensuring cables are contained safely within the bracket catchment rather than landing

in the batten tray - avoiding the risk of electrocution from screws penetrating up through them.

Features

- Quick and easy to install
- Reduced labour costs
- Cables securely contained
- Ensures tidy wiring



Patent #718806

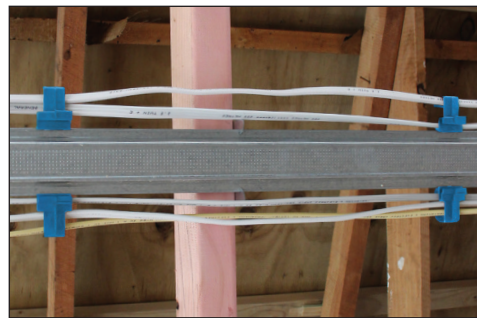
#WELL-HUNG
\$2.40 EA.*
+ GST



*SOLD IN PACKS OF 100



Typical cable installation



Well-Hung installation



SV ENTERPRISES
INNOVATIVE SOLUTIONS

Proudly supporting:



This Month

NEW! CABLEAWAY
ALUMINIUM SKIRTING
DUCT

LEDIL56 COMMERCIAL
HIGH BAY

GOT RUST? ZERUST
FLANGE SAVER

PAGE 3

PAGE 5

PAGE 8

FREE BLUETOOTH
SPEAKER

WHILE STOCKS LAST

When you spend
over \$1000 (excl
GST) on one
invoice this month



www.transnet.co.nz



Used in multi-level buildings where a tee-off from a main conductor to the switchboard on each floor is required, these connectors are fast and simple to install. They enable a connection to the main conductor without cutting it, thus reducing resistance.

Tap off made at each level connects to switchboard on that floor

Main cable feeding the building

FEATURES

- Intended for 'live' jointing on to LV mains cables
- Insulation piercing connection
- Up to 300mm² main & up to 2x35mm² service conductors
- Fully shrouded connector body
- Shear head bolt, detaches once correct torque is reached
- Designed and tested to IEC 61238-1
- Range taking capabilities
- Can be installed under live working conditions (following suitable procedures)
- Two sizes cover 50mm² - 300mm² main



#MSIP185
#MSIP300

USBXX-D

This range of connectors is used for incorporating one or two service take off connections onto LV mains cables.

FEATURES

- Composed of an Aluminium alloy body with Aluminium alloy bolts
- Suitable for Al or Cu conductors when used with resin joints

- Designed to meet the requirements of BS4579 Part 1 and Part 3 and engineering recommendation C79
- Can be installed under live working conditions (following suitable procedures)



Cat No.	Number of Service Take Offs	Dimensions (mm)			Application Tool	Cable Size (mm ²)	
		L	H	W		Main	Tap Off
USB95D	DOUBLE	44	35	26	13MM SOCKET	35-95	6-35
USB185D	DOUBLE	51	40	35	19MM SOCKET	35-185	6-35
USB300D	DOUBLE	51	45	41	19MM SOCKET	70-300	6-35
USB400D	DOUBLE	51	53	41	19MM SOCKET	185-400	6-35





SD501503DIV

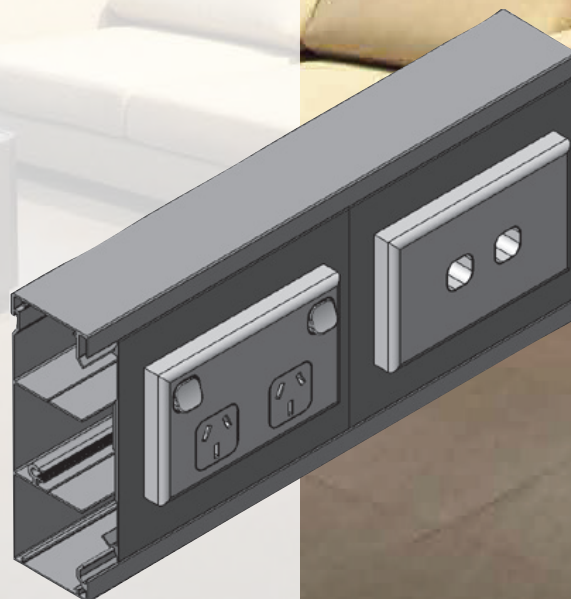
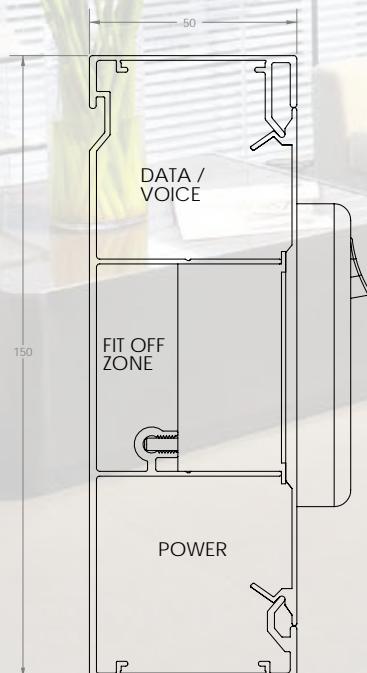
Cableaway's skirting duct range is by far the easiest way for housing and distribution of power and data cabling, from large commercial offices to the small home office.

Cableaway's 50mm x 150mm x 3 division skirting duct is perfect for the reticulation and mounting of power, Cat 5, Cat 6 and Cat 6A data cabling.

Cableaway's skirting duct is also able to handle Audio and Visual cables using Cableaway's 45 series multimedia outlets, making it easier than ever to adapt microphone jacks, HDMI, VGA, component and much more.

Features

- Extruded aluminium body
- Diecast blank ends
- Diecast corners
- Centre mounting of outlets
- Suitable for CAT 5, 6 and 6A data cables
- GPO mounting kit
- Data mounting kit
- Available with drop in or clip in lid section
- Continuous earthing system
- Easy installation
- Hanging recess (for installation above floor level)



NEW PRODUCT

SD SERIES ALUMINIUM SKIRTING DUCT

cable.
away

Manage Cables Better



A TRULY BIMETALLIC FRICTION WELDED CONNECTOR



VCXI lugs consist of an aluminium barrel linked to a copper palm by friction welding technology. The aluminium barrel is provided with a shear head bolt controlling the tightening torque.

APPLICATIONS

- Used for connection of aluminium or copper industrial conductor
- For indoor application only
- LV connection on busbar inside electrical panel and on compact type circuit breaker (new generation)

FEATURES

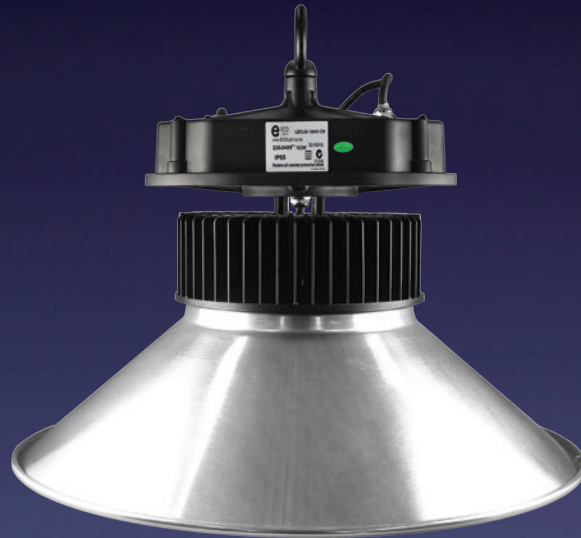
- Accepts aluminium and copper cables
- Copper palm compatible with the palms of the apparatus to be connected
- Only 5 lugs will connect from 25 to 500mm²
- Can be fitted into the new generation of compact type circuit breakers
- Inner surface of aluminium barrel is grooved at the manufacturing stage and greased to ensure a good electrical contact with wires to be joined
- Tightening torque controlled by shear head system
- No specific tool needed
- Only one bolt to tighten

Cat No.	Cross Section Range (mm ²)		Stud Size LB
	Aluminium	Copper	
VCXI-11-M6	25-70	25-50	M6
VCXI-14-M10	50-120	50-95	M10
VCXI-18-M10	95-185	95-120	M10
VCXI-22-M12	150-300	150-185	M12
VCXI-29-M16	240-500	240	M16





155LM/W | XITANIUM IP67 DRIVER | 120° WIDE OR 60° BEAM ANGLE OPTIONS



LEDIL56

The LEDIL56 range of LED high bays delivers exceptional performance with maximum efficiency. Choose the beam angle that best suits your needs depending on aisles, mounting

heights and density, and take advantage of the high lumen output created by a 155lm/W Luxeon LED array driven by superior Xitanium drivers.

LED COMMERCIAL HIGH BAY

WWW.ECOLIGHT.CO.NZ

Technical Specifications			
POWER CONSUMPTION	150W & 200W Options		
FIXTURE LUMENS	4000K	5000K	5700K
150W	22,500lm	23,250lm	23,500lm
200W	30,000lm	31,000lm	31,250lm
LED LIGHTING EFFICIENCY	155lm/W		
COLOUR TEMPERATURE	CW: 5700K (ex stock) NW: 4000K, PW: 5000K (special order)		
COLOUR RENDERING (RA)	>70 (ex stock) >80 (on special order)		
BEAM ANGLES	120° Wide Ali shroud (ex stock) 60° Narrow - PC or Ali shrouds (special order)		
DRIVER	Xitanium IP67		
CONTROL	1-10V Dimmable (Dali or inbuilt Merrytek daylight sensor on special order)		
IP RATING	IP65		
CALCULATED L70/B10	50,000 hours		
SDCM	<6		
LED ARRAY	Luxeon 3030		
UGR	<22		
IMPACT RESISTANCE	IK10		
AMBIENT TEMPERATURE	-30°C to +50°C		
POWER FACTOR	0.95		
BODY WEIGHT	150W = 4.4kg, 200W = 5.2kg		
INPUT VOLTAGE	220-240V AC		
MATERIAL	Cold pressed Ali with inbuilt copper heat pipe		
COATING	Anti-corrosion powder-coat		
CABLES	3 core power, 3m length with NZ plug 2 core dimming, 500mm length		



MD9272 TRMS LEAKAGE CLAMP

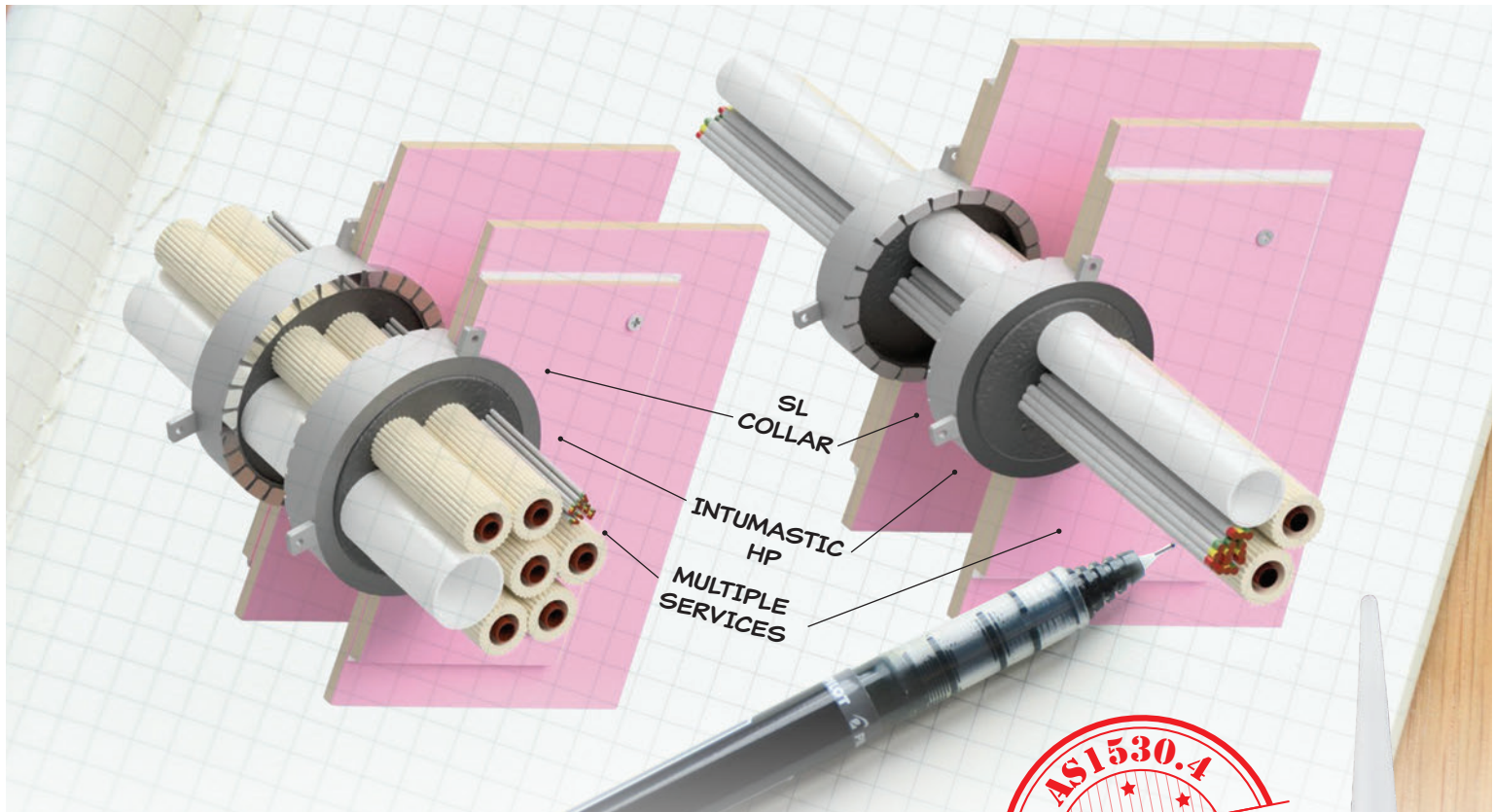
The MD9272 is a unique earth leakage clamp meter. It not only has the ability to accurately read the TRMS AC leakage current of a system, it can also detect losses in the system and suggest possible causes. Voltage (AC/DC), frequency, power, harmonic, power factor (PF), total harmonic distortion (THD) & crest factor measurements make this instrument suitable for any electrician or engineer.

MD9070 INSULATION & CONTINUITY TESTER

The MD9070 is a high accuracy insulation & continuity multimeter which may be used in a CAT IV/600V environment. Its dual digital display provides all needed data to the operator while its size ensures that it can be operated singlehandedly. Equipped with a built-in VFD feature, the MD9070 is capable of measuring true RMS values in accordance with frequency, performing PI/DAR measurements and diode test. Featuring data hold, memory, min/max, differential, auto power off, auto-ranging, frequency filter, lock feature, reset, relative function & more.

MD9226 TRMS CURRENT CLAMP

The MD9226 is a professional DC and TRMS AC current clamp meter capable of measuring capacitance & frequency, housed in a sturdy industrial-grade case. Equipped with a built-in VFD feature, the MD9226 is capable of measuring the true values in accordance with frequency. Features include peak value, data and MAX hold functions, auto power off, auto-ranging and a relative zero function.



SL COLLAR
INTUMASTIC HP
MULTIPLE SERVICES



NEW TESTED SYSTEM

FOR AIR CONDITIONING SERVICE PENETRATIONS THROUGH FIRE WALLS

Passive fire protection behind wall mounted heat pumps and Air conditioning units!

Until now there have been very few compliant solutions for treating multiple services penetrating firewalls behind heat pumps and Air conditioning units. We have just tested a new kit for sealing cables, PVC pipes, and insulated pair-coil through fire rated plasterboard walls, and are pleased to introduce the new Firetherm #FTHVAC80KIT. Now you can achieve a 90 minute fire integrity rating, with all the services going through the same opening!

The Firetherm SL collar is a slimline, stainless steel fire collar, packed with Intumescent graphite to maintain the structural integrity and insulation of the service penetration in the event of a fire. By inverting the collar and fixing it into the plasterboard wall on both sides you can then fit multiple cables, a PVC pipe, and A/C paircoil pipes through the collars, sealing the gaps with our Firetherm Intumastic HP.

For full installation instructions and technical support please contact us.



PROTECT FLANGE ASSEMBLIES

Corrosion Inhibiting Flange Saver



TransNet New Zealand Ltd

Auckland

78 Cryers Road
East Tamaki
Auckland
NEW ZEALAND
Ph 0800 442 182
Fax 0800 442 183
PO Box 39 383
Howick, Auckland

Wellington

18 Sydney Street
Petone
Wellington
NEW ZEALAND
Ph 04 576 2530
Fax 04 576 0040
PO Box 39 383
Howick, Auckland

NEW ZEALAND

sales@transnet.co.nz

TransNet Tonga

Ma'ufanga

Small Industries
Ma'ufanga
TONGA
Ph +67 627 939
Fax +67 627 976
PO Box 2932
Nukualofa

TONGA

transnet@kalianet.to

THE PROBLEM

Flange, valve and welded-joint corrosion costs clients millions annually!

- Complex geometry of flanges prevents effective surface preparation and coating
- Frozen nuts and bolts
- Weakened weld joints
- Loss of containment

THE IMPACT

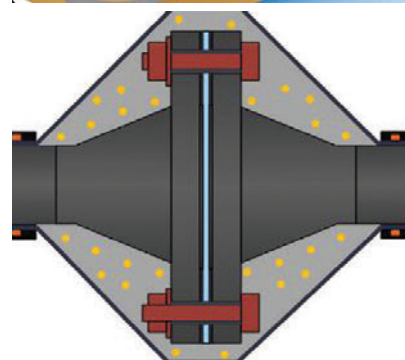
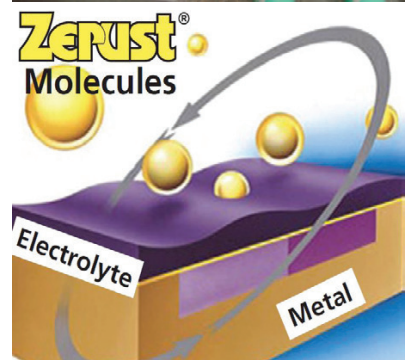
- High maintenance costs
- Downtime required for dismantling corroded flange assemblies for inspections, equipment removal, flange blinding, etc.
- Hot work repair of severely corroded flanges adds to downtime and costs
- Labour and equipment repairs and logistics can be costly, especially for offshore facilities
- Unscheduled stoppages due to corrosion-related leaks

Zerust®

THE SOLUTION

Zerust Transparent Flange Savers

- Rugged & transparent UV-resistant film cover designed for severe outdoor exposure
- Proven Zerust Vapor Corrosion Inhibitor (VCI) in film
- Easy installation and removal in minutes without special equipment
- Transparent film allows for visual monitoring of corrosion and/or leaks inside the Flange Saver
- Provides up to four years of corrosion protection in outdoor and offshore environments
- Inexpensive, simple, highly effective and versatile
- Inhibits additional corrosion even after corrosion has started; little/no surface prep required
- Sized to fit standard flanges; custom sizes may be special ordered
- Provides corrosion protection for FPSOs, jetties, offshore platforms & rigs, and other applications



TransNet NZ Ltd has made every reasonable effort to ensure the accuracy of this information and it is to the best of our knowledge correct and reliable. Under no circumstances does this constitute an assurance of any particular quality or performance and users should independently evaluate the suitability of products for their desired application. All information in this publication including pricing, drawings, illustrations, images and graphic designs are reflections of our current understanding. TransNet NZ Ltd reserves the right to make any adjustment to this information at any time. Our liability for the products outlined in this publication is set forth in our standard terms and conditions of trade. In case of any potential ambiguities or questions, please contact us for clarification.

